

# JUST DATA JANUARY

2023

BEST PRACTICE 8:

*Monitoring and Evaluation*

# How to use Rapid Cycle Testing

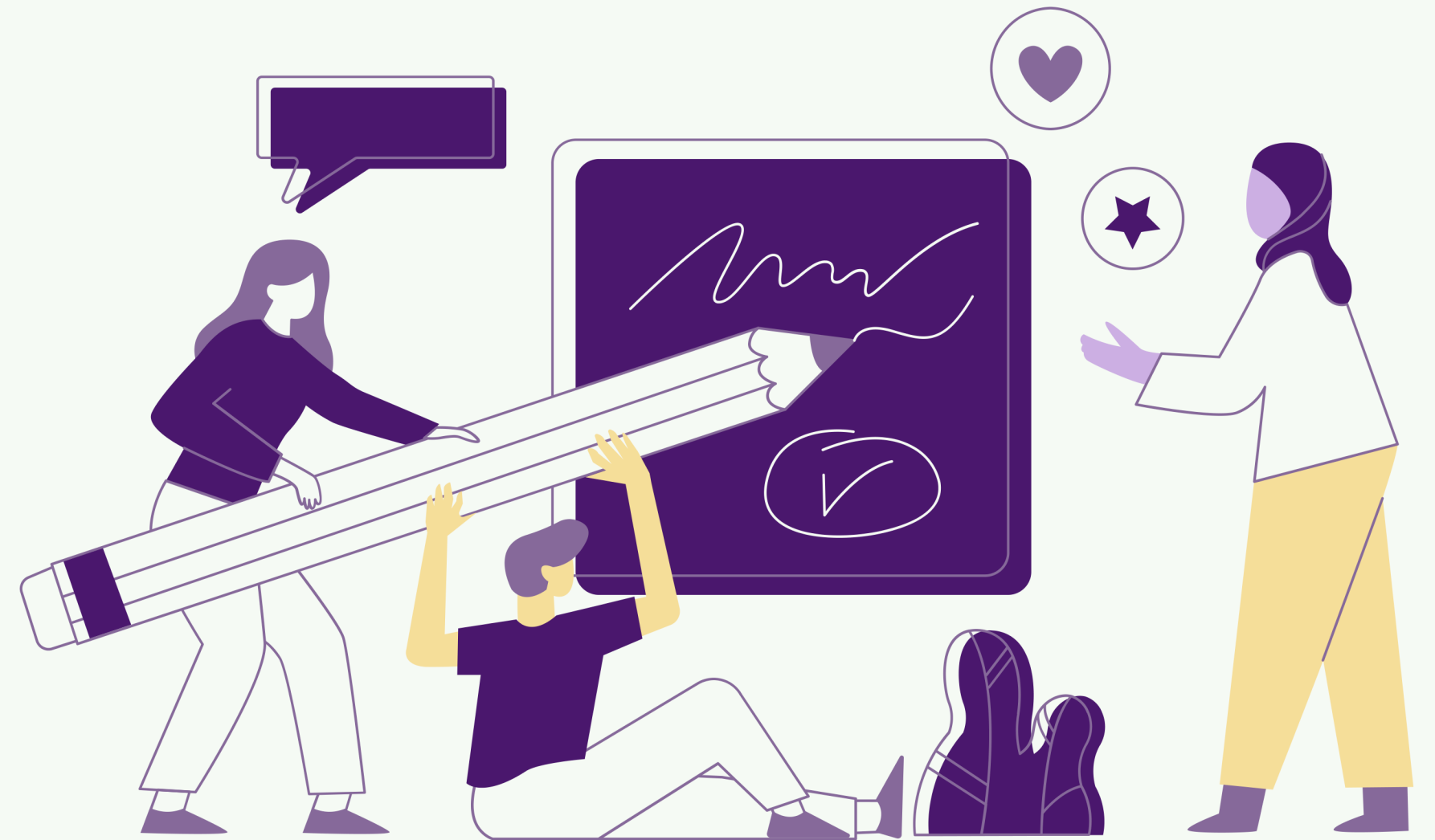
with FTC Training Coordinator  
Meghan R Fitzgerald, PhD



# Introduction

**Rapid cycle testing** helps you make a quick change and test if it worked

Get engaged in **Continuous Quality Improvement (CQI)** as recommended by Best Practices for Therapeutic Courts.



# Scientific Method

**1**

**Observation**

**4**

**Collect Data**

**2**

**Hypothesis**

**5**

**Analysis**

**3**

**Design an Experiment**

**6**

**Repeat**

# Rapid Cycle Testing

**1**

**Observation of Barrier**

**2**

**Best guess of root cause (hypothesis)**

**3**

**Design an Experiment**

**4**

**Collect Data**

**5**

**Analysis**

**6**

**Repeat**



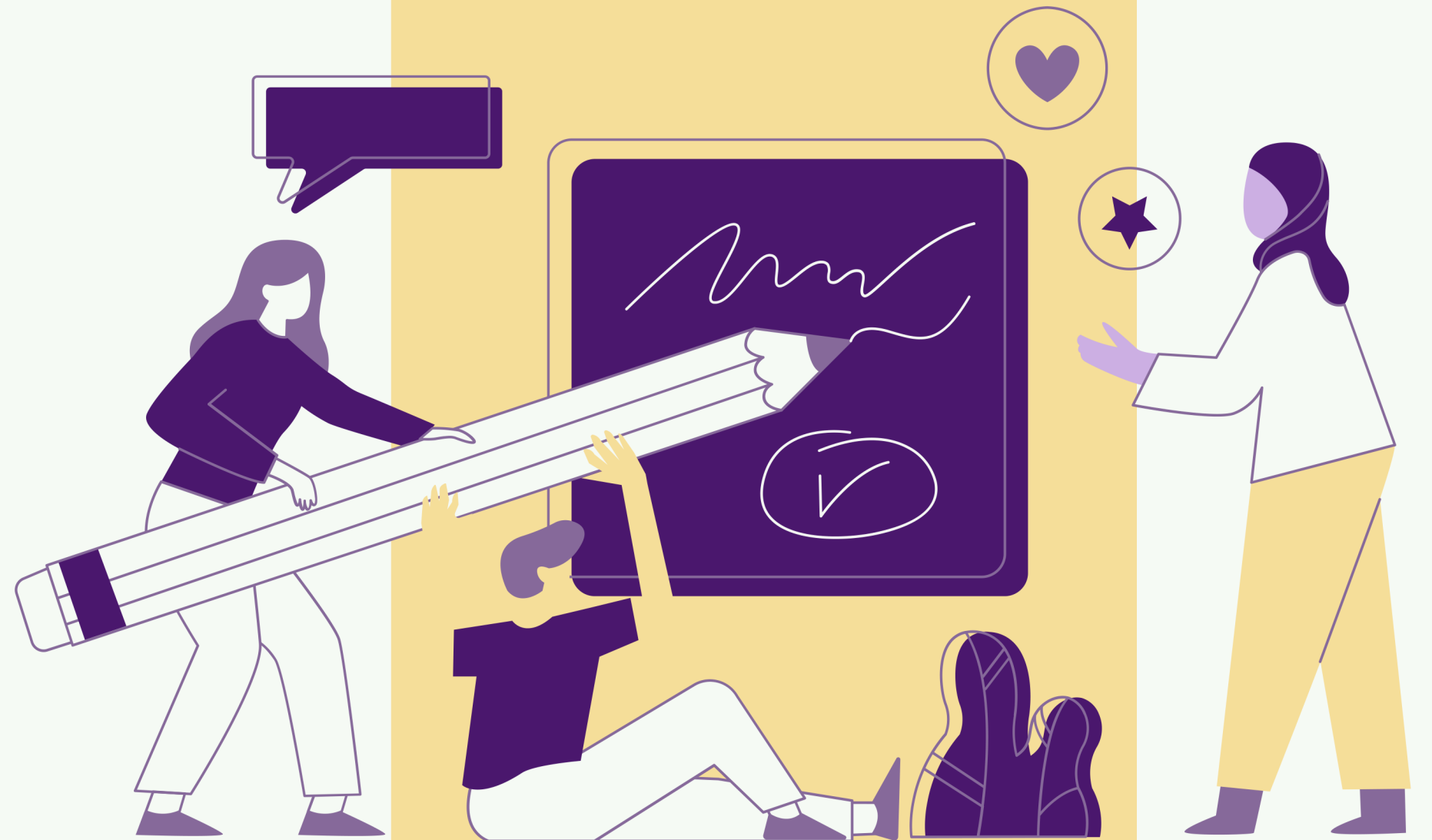
# Barrier

Participants are not moving between phases in a timely way



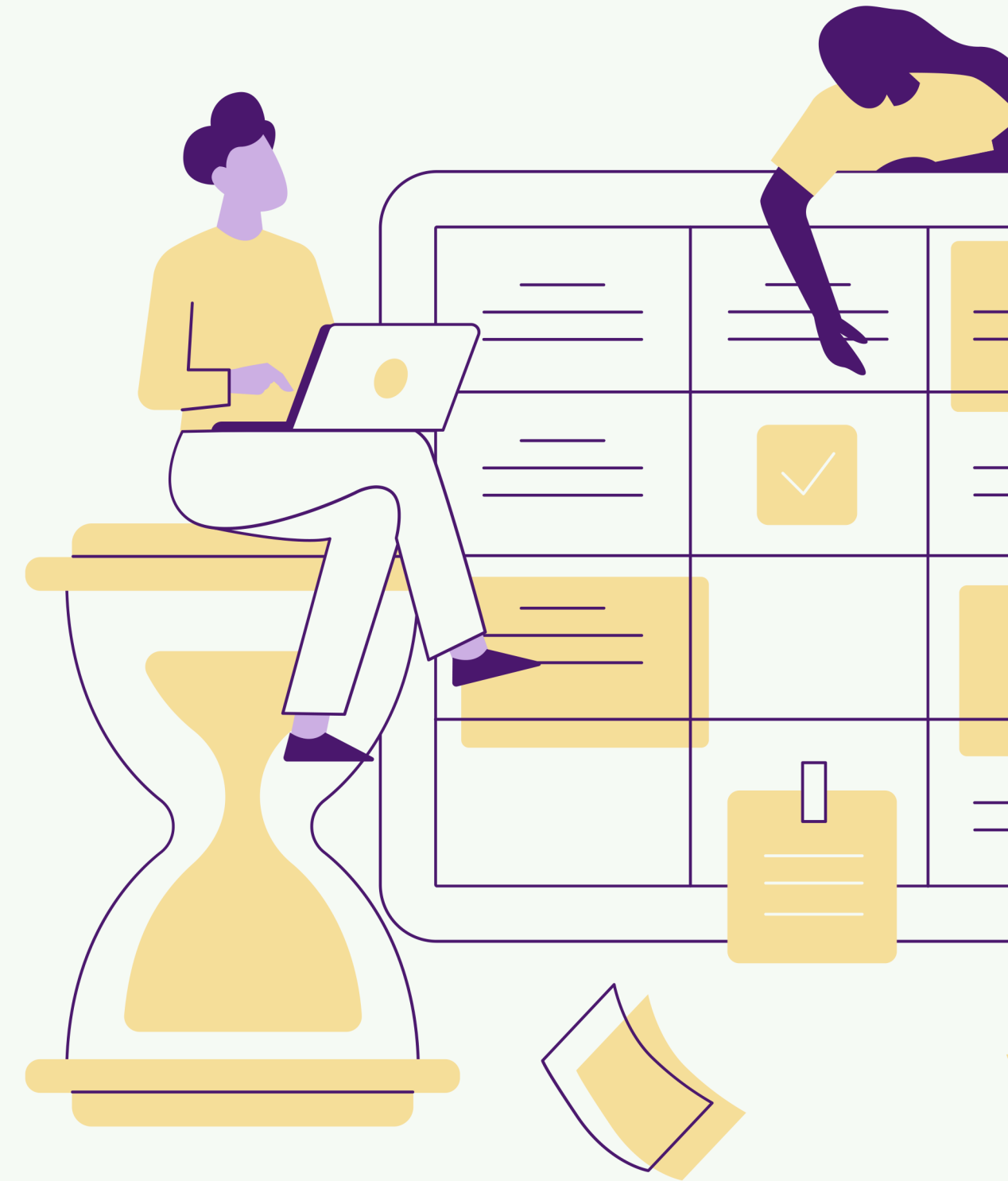
# Best guess of root cause?

- Motivation?
- Therapeutic Responses?
- Culture?



# Make a change

- Change our Therapeutic Response Matrix!
- Research: Best Practices, Samples, Research Articles
- Consult: Cultural Experts, Survey Experts (your State FTC Team!)
- Decide on the change and when to make it





# Testing

## Lets do a survey of participants!

Deploy a survey of all participants immediately and again 3, 6, and 9 months after the new matrix was put into place.





# Analysis

## Consult with an expert

To do this best, ask someone who is able to analyze your results statistically (your State FTC team can help!)

# Final Results

It helped!

Keep Revised Matrix

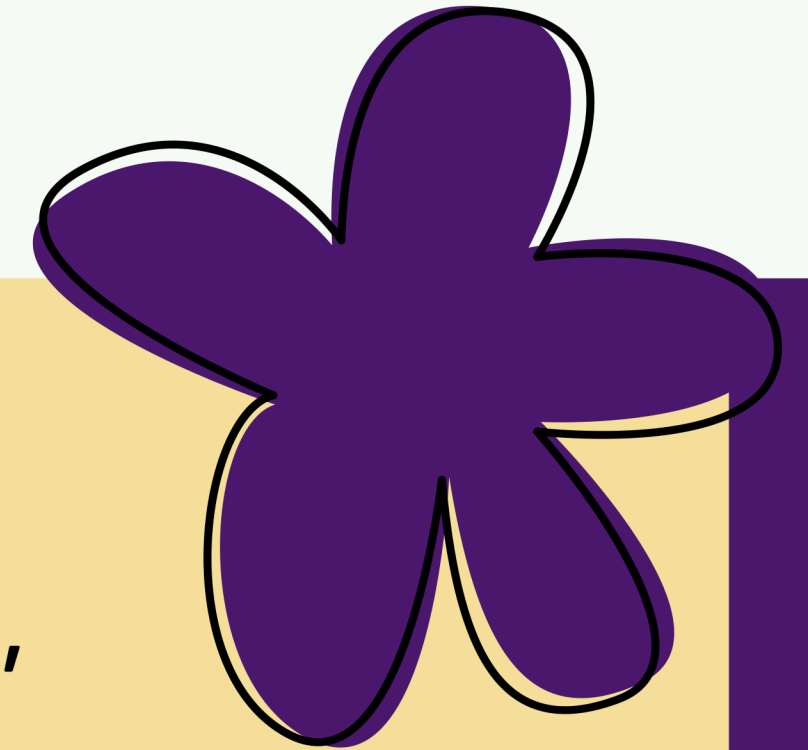
It helped, but could be better!

Make updates and test again

It didn't work :(

Go back to original method &  
test something else!

If you'd like some advice on making a survey, choosing a barrier, or how to analyze that data, please send an email along to your friendly State FTC Team, and we would be happy to help!



contact  
Meghan Fitzgerald, PhD  
FTC Training Coordinator  
WA Administrative Office of  
the Courts  
or use the QR code!